



GlobalTronics S.A.E.
 Lot 120, CPC Industrial Park, Northern Extension Area
 6th of October City, Giza, Egypt
T. +20 (2) 3832 4957 | +20 (2) 3831 0504
F. +20 (2) 3832 1225
E. info@gtronics.com

www.gtronics.com

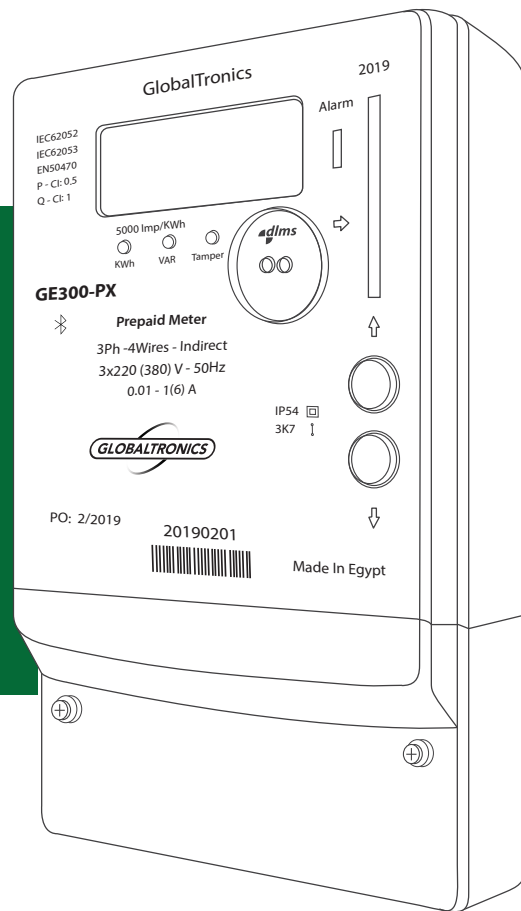
GlobalTronics S.A.E. manufactures and designs wide range of electricity measurement solutions, including both devices and systems. In 1998, GlobalTronics was founded to fulfill a growing need in the Egyptian market. Currently, GlobalTronics have claimed a leading market position in the field of power meters, covering Digital Meters, Prepaid Meters, and Smart Grid Solutions, in addition to Meters Management System (MMS) and Power Selling Management System.

Serving variety of metering needs, GlobalTronics offers custom-tailored products to fit the different requirements and demands of the end consumer. GlobalTronics provides the market with the finest collection of power meters, utilizing the latest technologies in the industry and the best worldwide quality of components and techniques. Our proven smart grid solutions have saved our customers an average of 15-20% in electricity consumption.

GE300-PX Series - Class 0.5 s

GE300-PX

Advanced Three Phase
 Electronic Prepaid Meter
 (CT Connected)



ABOUT THE PRODUCT

High-precision meter for generation and transmission applications. It is also deployed for high-end residential, commercial and industrial uses. GE300-PX Series has a class 0.5s for active energy and class 1 for reactive energy with many enhancements including smart grid solutions. It can operate in post and/or pre-payment modes, with driver to external relay for remote connect and disconnect.

GE300 provide two communication ports which include smart card interface and Bluetooth BLE V4+.

KEY FEATURES



PRODUCT FEATURES & SPECS

ACCURACY

- **Class:** 0.5 for Active Energy
- **Class:** 1.0 for Reactive Energy
- EN50470-1, EN50470-3, IEC62052-11, IEC62053-22.

VOLTAGE

- **Nominal:** 3x220/380V, 3x230/400V
- **Operating range:** 70V - 400V
- **Withstand:** 400V
- **Burden:** <10VA / phase @ Vn
- **Frequency:** 50Hz/60Hz

LCD DISPLAY

- 8 Large Digits
- Display measured items in OBIS codes
- LCD Messages available in Arabic language
- Programmable units, multipliers and leading zeros.
- Up to 64 user definable screen displays
- Displays any available meter parameter
- Backlight (Optional)

TAMPER DETECTION AND ALARMS

- Meter cover open detection
- Terminal cover open detection
- Fully load relay detection
- Over load detection
- Line and neutral current unbalance
- Reverse current sense
- Alarms are stored in event logs

PREPAYMENT

- Credit / debit operation
- Using Smart card and Bluetooth BLE V4+
- Internal disconnect relay

SECURITY

- Multi-Level Security (username and passwords including encrypted login).
- Up to 4 independent security levels
- AES128 used in all information exchanges through AMI system.

STEP TARIFF

- Up to 7 consumption tariff
- Up to 7 consumption limits
- Up to 7 KWH prices value per each tariff
- Up to 7 customer service value prices per each tariff
- Friendly hours, weekends and holidays
- Up to Three Recalculation limits
- Non consumption added value

TIME KEEPING

- **Accuracy:**
 - less than 1s/day (Nominal Temperature)
- **Backup Types:**
 - Lithium battery (10 years without power)
 - Supper capacitor (2 days without power)

LOAD SURVEY / PROFILE

- Large data storage space
- 30 day capacity for consumption and amount consumed credit per each day.
- One year capacity for consumption and amount consumed credit per each month.
- Four years maximum demand values.

CURRENT

- 1(6) - 5/6A
- Short time over-current - 30 times the IMAX for 0.5 seconds.
- Burden - <0.5VA/phase

MEASUREMENT MODES

- 3phase 4 Wires
- 3phase 3 Wires
- Driver for Disconnect switch, 3 current sensors

TEMPERATURE RANGE

- Operating -40 to +70°C
- Storage -40 to +80°C

SOFTWARE

- GTMTalk Windows® software (optional), can be used for programming and reading the meter.
- GTMTalk also allows offline configuration of tariff programs and all meter parameters, for later upload.

DIMNESIONS

- **(LxWxH):** 292mm x 169mm x 72.5mm

PULSING IO

- 2 outputs (Optional)
- Programmable 1ms to 100ms

MEASURED ENERGY VALUES

- Import/Export kWh and kVarh
- Absolute kWh and kVarh
- 4 quadrant kWh and kVarh
- Cumulative kWh and kVarh
- Maximum Demand kW
- Maximum Demand Ampere

QUALITY OF SUPPLY FEATURES

- THD
- Unbalance
- Fundamental Voltage, Current and Watt measurement.
- Harmonics (up to the 50th)
- Sag / Swell

HUMIDITY RANGE

- 0 to 95% non-condensing for 30 days
- IP54

OTHER MEASURED & DISPLAYED VALUES

- Power: W, Var, VA
- RMS Voltage (3 Phases)
- RMS Current (3 Phases and Neutral)
- Power factor (3 Phases and total)
- Frequency
- Phase or angles (3 Phases)

COMMUNICATIONS

- **Local:** Optical port
- **Local:** Smart Card and Bluetooth BLE V4+
- Universal interface for AMI modem
- **RS485:** Optional

COMMUNICATIONS FEATURES

- Optical port (IEC 62056-21/ DLMS COSEM (IEC 62056-46)).
- RS485 - 2 wire (IEC 62056-21/ DLMS COSEM).
- **DLMS (HDLC Profile):** IEC62056-46